

2016-2017 Impact Report



MANDY'S
farm
GROW WITH US.

Our Mission

Mandy's Farm is a nonprofit organization that assists individuals with developmental disabilities in achieving their goals by structuring a positive, purposeful and caring environment for living, learning, and working in the community.

Mandy's Farm serves over 125 adults with developmental disabilities living in the Albuquerque metro area. **100% of those we serve are living below the federal poverty line.**

The services at Mandy's Farm provide a lifeline to adults with developmental disabilities, allowing them to successfully participate in their community, obtain and retain employment, and reduce instances of abuse, neglect, and exploitation.



Mandy's Farm provides support within three homes where adults with disabilities choose to live as housemates. We also provide services to individuals who live with families or surrogate families. These services help individuals to live healthy, safe, and independent lives.



Mandy's Farm believes that everyone can work. We assist adults with disabilities in obtaining employment in typical community settings making minimum wage or higher. We also provide on-the-job support to help those we serve retain employment.

Through our Appaloosa Art Space program in Nob Hill, the individuals we serve are given access to visual arts, ceramics, reading and writing, language classes (American Sign Language and Spanish), and community volunteer opportunities, often for the first time.



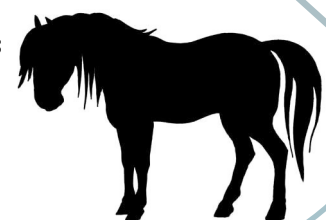
One of the things that makes Mandy's Farm unique is the farm itself. We build self-efficacy, independence, and pre-vocational skills through workshops in our barn, animal husbandry activities, and gardening experiences. Clients are then able to leverage these skills to enter the workforce.

MANDY'S farm

We currently have the sole therapeutic pool located in the South Valley. Our adaptive aquatics center provides opportunities for clients to build strength, experience sensory relief, and have fun in a safe, relaxing environment. We also offer the pool for rent to individuals who need access to a therapeutic pool, but do not receive Mandy's Farm services.



Through our adaptive horsemanship program, Mandy's Farm provides equine-assisted therapy and horseback riding lessons to individuals of all ages, with and without disabilities. This allows participants to build physical strength, social skills, and self confidence as they partner with their horse.



Join our Cabrito Club!



Cabrito Club members are able to invest in Mandy's Farm at the level and pace that works best for their budget. Members can choose to make a recurring monthly or annual multi-year commitment.

What is the Cabrito Club?

The Mandy's Farm Cabrito ("Little Goat") Club is made up of a philanthropic group of extraordinary community members who share a strong interest in care and support for adults with developmental disabilities. The funds donated on a monthly or annual basis by each Cabrito Club member will be used to provide core support to the essential residential, pre-vocational, and employment services provided at Mandy's Farm.

No meetings are required to be a member of the Cabrito Club! However, we do hope you will join us for the Annual Cabrito Club Baby Goat Appreciation Brunch as well as take advantage of other exclusive Cabrito Club perks and thank you opportunities.

For more information about the Mandy's Farm Cabrito Club, please contact us via e-mail at info@mandysfarm.org.

Would you like to join online? Visit www.mandysfarm.org/donate and become a Cabrito Club member today!

El Pastor Membership – A \$2,000 Annual Gift includes:

- ◇ Acknowledgement as a 'Host' in all online and print materials for the Annual Kentucky Derby Party;
- ◇ Two tickets to the Kentucky Derby Party;
- ◇ Invitation to the exclusive Annual Cabrito Club Baby Goat Appreciation Brunch;
- ◇ A personal tour of Mandy's Farm programs and lunch with the Founder and Executive Director;
- ◇ **Can consist of a one-time \$2,000 donation or a monthly donation of \$167.**

La Familia Membership - A \$1,000 Annual Gift includes:

- ◇ Invitation to the exclusive Annual Cabrito Club Baby Goat Appreciation Brunch;
- ◇ A personal tour of Mandy's Farm programs and lunch with the Development Director;
- ◇ **Can consist of a one-time \$1,000 donation or a monthly donation of \$84.**

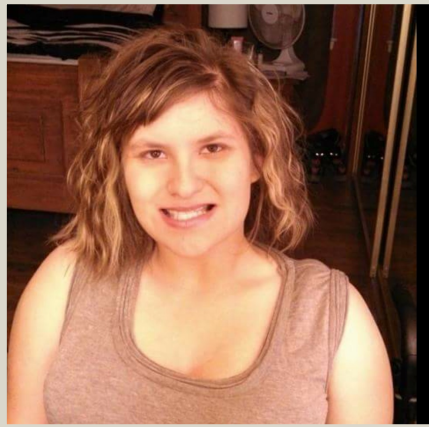
Your Impact



11 individuals served in supported living homes.

12 families provided with customized in-home supports

On-demand emergency supports available 24/7 for existing clients in mental health or medical crisis.



Teri, the newest member of our residential program, relaxes at home.



Courtney as a receptionist at Appaloosa Art Space with enhanced support from her job coach, Lena.



11 individuals currently in job development services.

15 individuals provided with job coaching and other on-the-job supports.

2 individuals engaged in self-employment services.

Residential Support

The individuals we serve often require intensive support in their homes to ensure health and safety. Our services allow individuals to live in the situation that best meets their needs, whether with family, a surrogate family, or with roommates. Our staff balances building independence with providing the supports needed for continued success.

Teri Gallegos, a young woman who recently joined our residence in the Northeast heights, said **"I was nervous at first to leave my family and move out on my own, but I feel confident in myself now that I have moved to Mandy's Farm. We are like a family here. I've learned how to manage my own space and I love [the staff] because they listen to me and my opinions, and give me confidence boosters that I can do anything, it just takes me some time."**

Everyone Can Work:

Adults with developmental disabilities are more likely to be unemployed following high school than their neuro-typical peers, with an unemployment rate of 65.6% across the country. In New Mexico, the unemployment rate for adults with disabilities is even higher, hovering around 70-75%.

The individuals we serve often require enhanced support in the community and the workplace to assist with personal care, sensory regulation, and behavioral support. With the support provided by Mandy's Farm, service recipients are able to successfully obtain and retain employment in the community at minimum wage or higher.

At Mandy's Farm, we work to match the needs of employers with qualified individuals who are currently seeking work. We recently realized that we needed a receptionist to handle visitors and phone calls at our administrative offices in Nob Hill. We hired Courtney and Brian, who were job seekers in the Everyone Can Work program. They have made our offices a more inviting, organized, and happy place.

Your Impact

Pre-Vocational Training

In serving adults with developmental disabilities, so much of what we do is focused on building independence. Part of this work is preparing individuals who have graduated high school to move into the workforce. This can consist of hands-on skill-building in the barn and the garden, participating in volunteer work at local nonprofits, and learning about boundaries, relationships, and community safety.

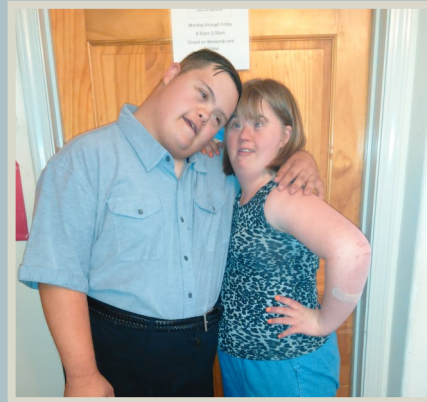
One of our pre-vocational participants, Josh Caldwell, has recently started job development and is actively looking for work in the community. Josh has grown so much through our program and we are proud of him for taking this next step. He makes sure to wear his new professional clothes in order to impress potential employers on his job hunt. We are certain that Josh has developed the skills he needs to make a great employee.

Animal Husbandry & Adaptive Horsemanship

Maegan Dover, age 22, came to Mandy's Farm in early July in hopes of gaining more confidence and independence, while simultaneously developing a hobby that could help her grow and adapt. With loving encouragement from her parents, she began taking private horseback riding lessons. When she first began, she was too afraid to approach or touch any of the Farm's horses. With patience and time, Maegan became more comfortable around the horses, starting with the Farm's sweet miniature horse, Charm. Maegan quickly became confident around the horses, even with Beauty, the Farm's largest horse. Now Maegan has settled in to the routine of riding. She grooms, mounts, and does activities on horseback with no fear. She is sitting up taller and smiling, and seems more at peace after her lessons. Horses have always been seen as helpful and therapeutic animals. **Maegan's story is just another wonderful example of how important it is to develop trusting connections with animals and people, as well as another assurance of the incredible work happening here at Mandy's Farm.**

91 individuals currently attending day services.

4600 hours of community service provided to local non-profits by Mandy's Farm service recipients during pre-vocational training this year.



Josh (left) says goodbye to Angelina (right) as he leaves for job development.



95 individuals served through adaptive horsemanship and horseback riding lessons.

Maegan grooms Beauty during a private class.

49 animals were provided a loving home, including five horses, three alpacas, one goose, one rooster, five ducks, four dogs, two cats, 15 chickens, and 13 goats.



Our Financials

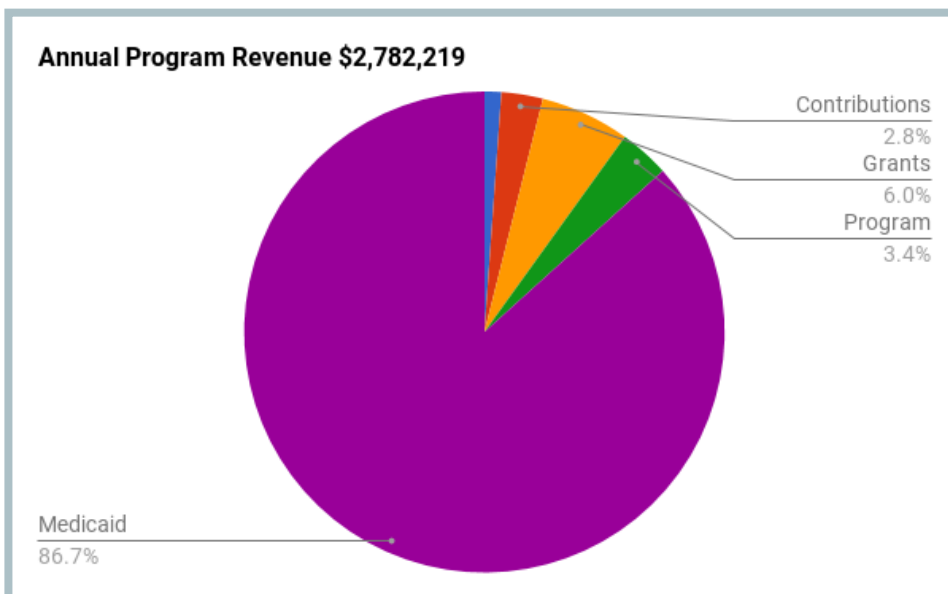
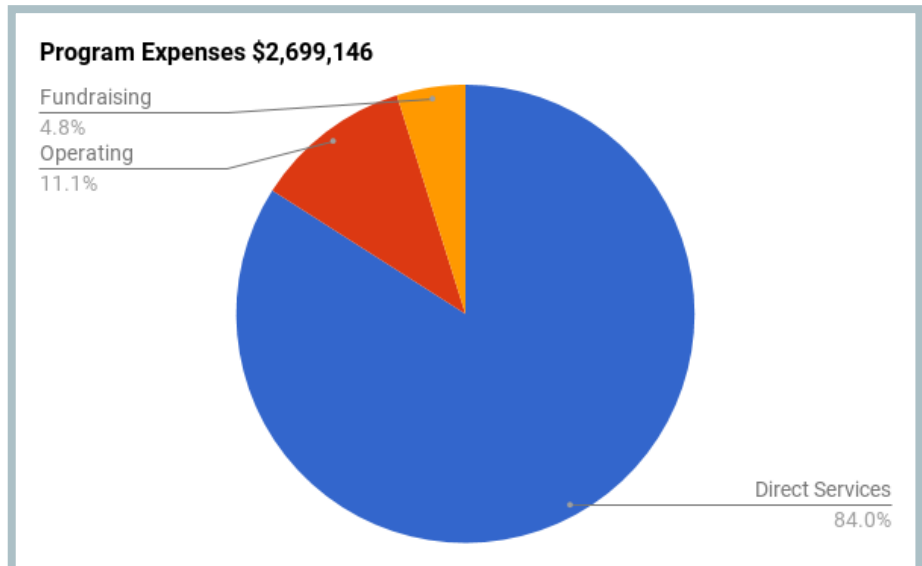
Growth at Mandy's Farm!

Mandy's Farm had another exciting year providing supports to individuals with developmental disabilities in their homes, the community and at work!

We were able to significantly increase our supports to families and individuals through the addition of a new Supported Living residence (a group home setting where adults with developmental disabilities choose to live as roommates with staff support), increased attendance within our active pre-vocational programs, increased enrollment in our employment program, and the continued growth of our horsemanship program.

We are very proud that we have been able to expand quality services without seeing a significant increase in our expenses. Our focus continues to be on the quality of care and impact of the services we provide to the individuals we serve and our community.

Please visit www.guidestar.org to view our 990 tax returns, or, for more information, please contact us directly by e-mailing us at info@mandysfarm.org or calling us at 505-503-1141.



Contact us at jessie@mandysfarm.org or at 505-503-1141 to find out more about how to provide core support to Mandy's Farm through a multi-year gift.

Who We Are



Ruthie and David Robbins, Mandy's Farm founders, and the parents of Mandy, at our 2017 Kentucky Derby Fundraiser!



Julia Bursum (left), Michelle King (right), Melissa McCue (below left), and Jessie Calero (below right), enjoy the Kentucky Derby Party with the rest of the Mandy's Farm family.



Julia Bursum, Karen Padilla, Ruthie Robbins, and Loretta Levy (left to right) at the Kentucky Derby Party.

Our Board of Directors

Ruthie Horn Robbins, JD, President & Founder

Loretta Levy, RN, Vice President

Caitlin Gutierrez, Treasurer

Michelle King, Director

"I give to Mandy's Farm because they provide important services to people with disabilities in a unique and beautiful farm environment."

Julia Bursum, Director

"I give to Mandy's Farm because I believe in supporting a dynamic facility for adults with developmental disabilities."

Karen Padilla, Director

"Mandy's Farm offers caring options that are not always available through other organizations or avenues."

Dawn Montano, Director

"I give to Mandy's Farm because I am impressed with all the programs available."

Bryan Ross, Director

"I give to Mandy's Farm because I believe in their mission. The Farm provides education, interaction, and purpose. The staff is caring and really put their hearts into what they do."

Trent Toulouse, Ph.D., Director

"Mandy's Farm was founded on a vision that everyone deserves a supported, respected, and fulfilling life. They have amazing programs that include full-time care, job placement, and daily learning activities."

Our Leadership

Melissa McCue, Executive Director

Email Address: Melissa@mandysfarm.org

Phone Number: 505-503-1141 ext. 700

Jessie Calero, Development Director

Email Address: Jessie@mandysfarm.org

Phone Number: 505-503-1141 ext. 704

Thank You to Our Community Partners



Community Support

3B Yoga New Mexico
Alliance Francaise
Aon Risk Solutions
Baca's Trees
CaringCent
Castaneda's Catering
Clean Image, LLC
Hinton Family Partnership LTD
Hunter Bower Lumber
Jay Walton Automotive
MedFlight Air Ambulance
Miller Feed & Supply, LLC
Monte Vista Christian Church
New Mexico Bank & Trust
New Mexico Mutual
One Community Auto
Payday Staffing Solutions
Poms & Associate's Insurance Brokers, Inc.
Smith's Community Rewards Program
St. John's United Methodist Church
Thomas Partner's, Inc.
University of New Mexico Work-Study Program

Grant Providers

Albuquerque Academy via:
- The Community Builders Program -
Albuquerque Community Foundation via:
- The Garcia Automotive Group Endowment Fund -
- The Sandia Foundation -
- The Estate of Hugh and Helen Woodward Endowment Fund -
Albuquerque Involved
Carl C. Sr. and Marie Jo Anderson
Charitable Foundation
Bernalillo County Social Services
Calvin P. Horn Foundation
The Central New Mexico Encore Fellowship Program
The Department of Transportation's 5310 Grant
The Happy Jack Foundation for Autism
The Hazel Rose Family Foundation
H.B. and Lucille Horn Foundation
The Lipscomb Trust
Maria L. Globus Living Trust
NM Commission for Community Volunteerism
The Randy Velarde Charitable Trust
United Way of Central New Mexico
The Vicki Velarde Charitable Trust



Your Donation

What you do:

Donating to Mandy's Farm on a one-time, monthly recurring, or annual basis provides essential services for adults with disabilities.



Kenton volunteers at Ronald McDonald House.

Who this benefits:

Your donation provides a life line to adults with developmental disabilities, while simultaneously benefitting their families, who often serve as their primary caregivers. Through supporting Mandy's Farm programming, donors offer family members:

- training opportunities to learn prevention and reporting requirements for suspected instances of abuse, neglect, and exploitation;
- respite time to manage personal matters;
- opportunities to obtain employment during their adult child's program hours.

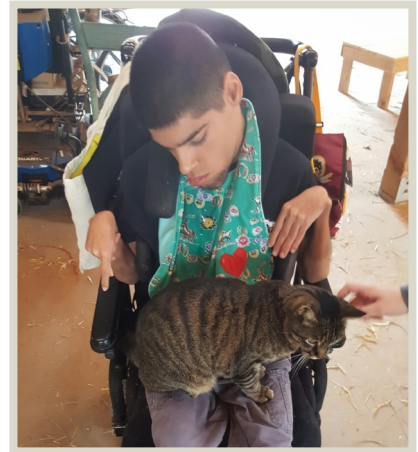
What that means:

These essential services can consist of a variety of things:

- specialized on-the-job coaching for individuals who need intensive support to retain their employment;
- emergency enhanced staffing support for clients in mental health or medical crisis;
- continual services in cases where individuals temporarily lose, or experience a reduction in, their Medicaid funding.



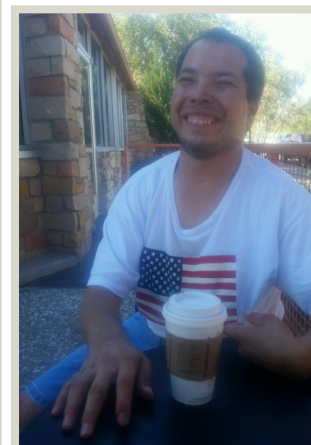
Kelly spends time with a barn cat (right). Anthony, Ed, Luis, Josh, and Dan enjoy the Botanical Gardens (top).



Impact:

Through your donations, those we serve:

- gain access to the community and avoid institutionalization;
- increase their life skills, independence, and safety skills;
- obtain and retain employment, allowing them to become less dependent on social security;
- reduce their risk of abuse, neglect, or exploitation.



Gus enjoys a morning cup of coffee.

MANDY'S *farm* GROW WITH US.

IN-KIND WISHLIST

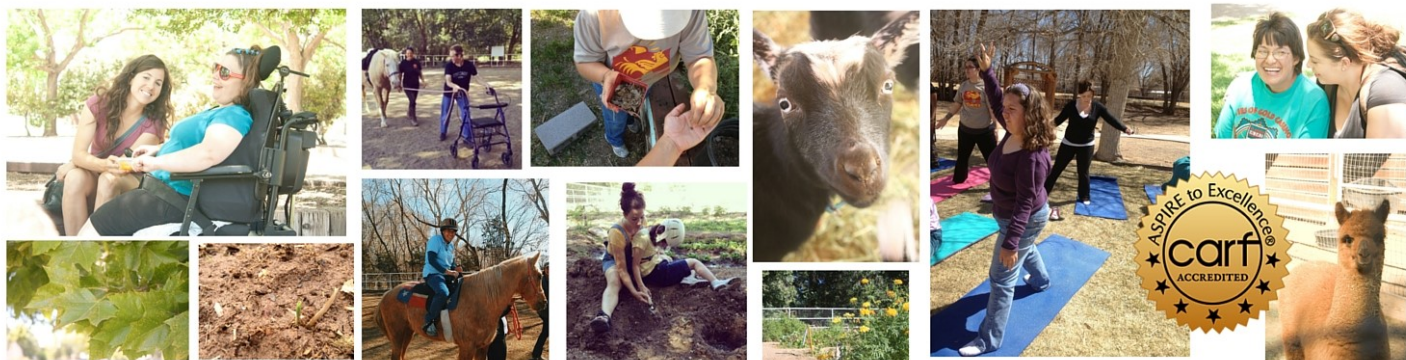
Are you looking to donate in-kind goods to Mandy's Farm?
Here are some of the things we would love to put to good use:

Copy Paper
Laundry Soap
Toilet Paper
Hand Sanitizer
Paper Towels
Plasticware
Silverware
3-Ring Binders
Elmer's Glue

Markers
Sketchbooks
Paintbrushes
Construction Paper
Watercolor Paper
Watercolor Paint
Tempera Paint
Acrylic Paint
Yoga Mats

Gift Certificates to:
Amazon
Walmart
Target
Smith's/ Albertson's
Home Depot/ Lowe's
Miller's Feed
PetSmart/ PetCo
Office Depot

DO YOU WANT US TO PICK UP YOUR DONATION? SEND AN E-MAIL
TO JESSIE@MANDYSFARM.ORG AND WE'LL DO THE HEAVY LIFTING!





Visit our Facebook event and click on "Ticket Information" to purchase VIP passes ahead of time!



MANDY'S
farm
GROW WITH US.



Additional parking with shuttle service available at the Mountain View Community Center!

Sponsored by:



Jamm Jumper Rentals

Sponsored by:



Millers Feed
& Supply LLC

OCTOBER 28TH, 1PM-4PM
346 Clark Rd SW
Albuquerque, NM 87105

WWW.MANDYSFARM.ORG

Annual Harvest Festival

AN ALL AGES AND ALL ABILITIES EVENT FEATURING:

PUMPKIN PAINTING
PONY RIDES
A HAUNTED BARN
A CAKE WALK AND BAKE SALE
LOCAL FOOD TRUCKS
BEER GARDEN
LIVE MUSIC



Other Ways to Support Mandy's Farm



Megan picks fruit in the Mandy's Farm orchard.

A Profile in Giving

"I give to Mandy's Farm because my daughter, Megan, lives there and attends their day services program. Mandy's Farm is a family and the staff genuinely care about their clients. Mandy's Farm provides valuable services to so many adults just like Megan, allowing them to grow and recognize their individual potential."

-Karen Padilla, Mother of Megan

As a nonprofit organization, Mandy's Farm relies on the generosity of volunteers who donate their time, as well as members of the community who make charitable contributions. Consider supporting Mandy's Farm in one of the following ways:

- Follow us on social media or subscribe to our mailed and digital newsletters to share our message with your friends and family.
- Become a monthly or one-time donor of \$25 or more by visiting www.mandysfarm.org/donate.
- Are you a business owner? Purchase a sponsorship to support a Mandy's Farm event or program you are passionate about.
- Include Mandy's Farm in your estate to ensure our services continue for years to come.
- Send an email to jeb@mandysfarm.org to find out more about current volunteer opportunities. Whether you are an individual or

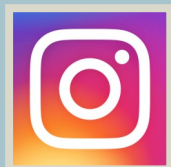


part of a larger group, we can always use your help!

Jenny rides Beauty while snuggling a friendly barn cat.

Visit us at www.mandysfarm.org to learn more.

Visit www.mandysfarm.org/donate to invest in our work.



@mandysfarmnm



@mandysfarmnm



@mandysfarm